

Category

Loudspeakers

Code

TR400-SX

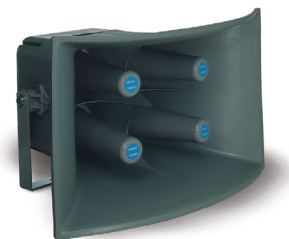
Range

Horns with separate unit

Description

240/600 W Multiple-Horn Loudspeaker

Horn speaker unit consisting of reinforced fibreglass. Waterproof and weatherproof. It can mount four 60 W/16 ohm UT60 units (for a total output power of 240 W) or four 150 W/16 ohm UT150 units (for a total output power of 600 W). The horn is built so as to synchronise the sound waves generated by the single units. In order to ensure high efficiency and excellent intelligibility of speech, each unit uses its own separate curved horn path to scatter the sound energy produced, thus avoiding interference effects.



Technical data

	TR400-SX + UT60	TR400-SX + UT150
Rated output power	240 W (4 x 60 W)	600 W (4 x 150 W)
Impedance	16 Ω	
Frequency response	150 ÷ 6.000 Hz	100 ÷ 10.000 Hz
Efficiency (1W/1m)	112 dB	114 dB
Acoustic pressure (Pnom/1m)	135 dB	141 dB
Horizontal dispersion angle (2 kHz)	125°	
Vertical dispersion angle (2 kHz)	150°	
Dimensions (W x H x D)	680 x 410 x 545 mm	
Weight without/with the unit	10 kg / 16,4 kg	10 kg / 22 kg