



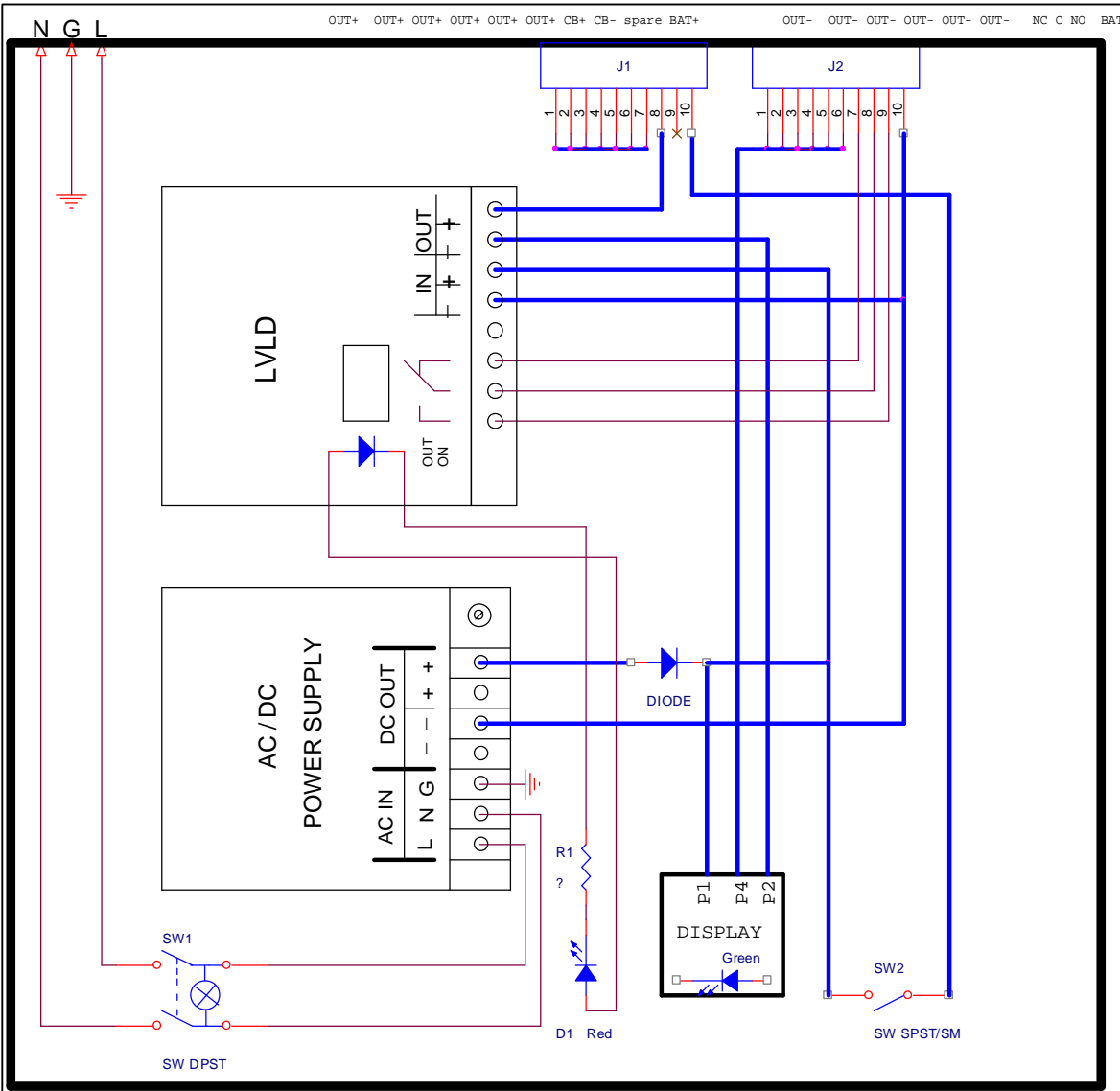
AR27xx-2U-BK

POWER SUPPLY – CHARGER

Models: AR2702-2U-BK
AR2705-2U-BK
AR2713-2U-BK

Specification:

Item	Characteristics	Description		
1	System Type	AR2702-2U	AR2705-2U	AR2713-2U
2	Internal Power Supply Module	S-50-24AD	S-150-27	S-350-27
3	INPUT			
	AC Input Voltage Range	88 ÷ 132/170-264Vac, selected by int. switch		
	AC Input Frequency Range	47 ÷ 63 Hz		
	AC Input Current	1.3A/115Vac 0.65A/230Vac	3.2A/115Vac 1.6A/230Vac	6.5A/115Vac 4A/230Vac
	Efficiency	> 82 %	> 86 %	> 82 %
4	OUTPUT			
	Output Power	50W	150W	350W
	Nominal DC Output Voltage	27 VDC		
	Output Current Range	2A	5A	13A
	Ripple & Noise	100mVp-p	200mVp-p	250mVp-p
	Line Regulation	± 1%		
	Load Regulation	± 2%		
5	PROTECTIONS			
	Overload Protection	105~135% of rated output power		
	Over Voltage Protection	31.1-39.2 Vdc		
	Battery	Circuit Breaker		
	Load	External Circuit Breaker		
6	LVD			
	Battery Low Voltage Alarm	21.0-22.0 Vdc		
	Battery Low Voltage Load Disconnect	20.0 - 21.0 Vdc		
	Battery Hi Voltage Load Reconnect.	24.0 - 25.0 Vdc		
7	ALARM & INDICATIONS			
	DC Voltage/Current	LCD Display		
	DC OK	LED		
	AC OK	Neon Lamp		
	BATTERY LOW			
8	MOUNTING	All connections are at the bottom side		
	AC INPUT	IEC AC		
	Battery Connection	Terminal Block		
	DC OUPUT	Terminal Block		
	DC OUPUT	Terminal Block		
9	ENVIRONMENT			
	Working Temp.	-10°C ÷ +60°C (Refer to derating curve)		
	Working Humidity	20% ÷ 90% RH non-condensing		
	Storage Temp.	-40°C ÷ +85°C		
	Storage Humidity	10% ÷ 95% RH		
10	SAFETY & EMC			
	Safety Standards (meet)	UL1950, EN60950		
	Withstand Voltage	I/O: 1.5kVac, I/FG: 1.5kVac, O/FG: 0.5kVac		
	ISOLATION RESISTANCE	I/O, I/FG, O/FG" 100M Ohms/500Vdc		
11	MECHANICAL			
	DIMENSION (WxHxD):	483x254x88		



AC POWER

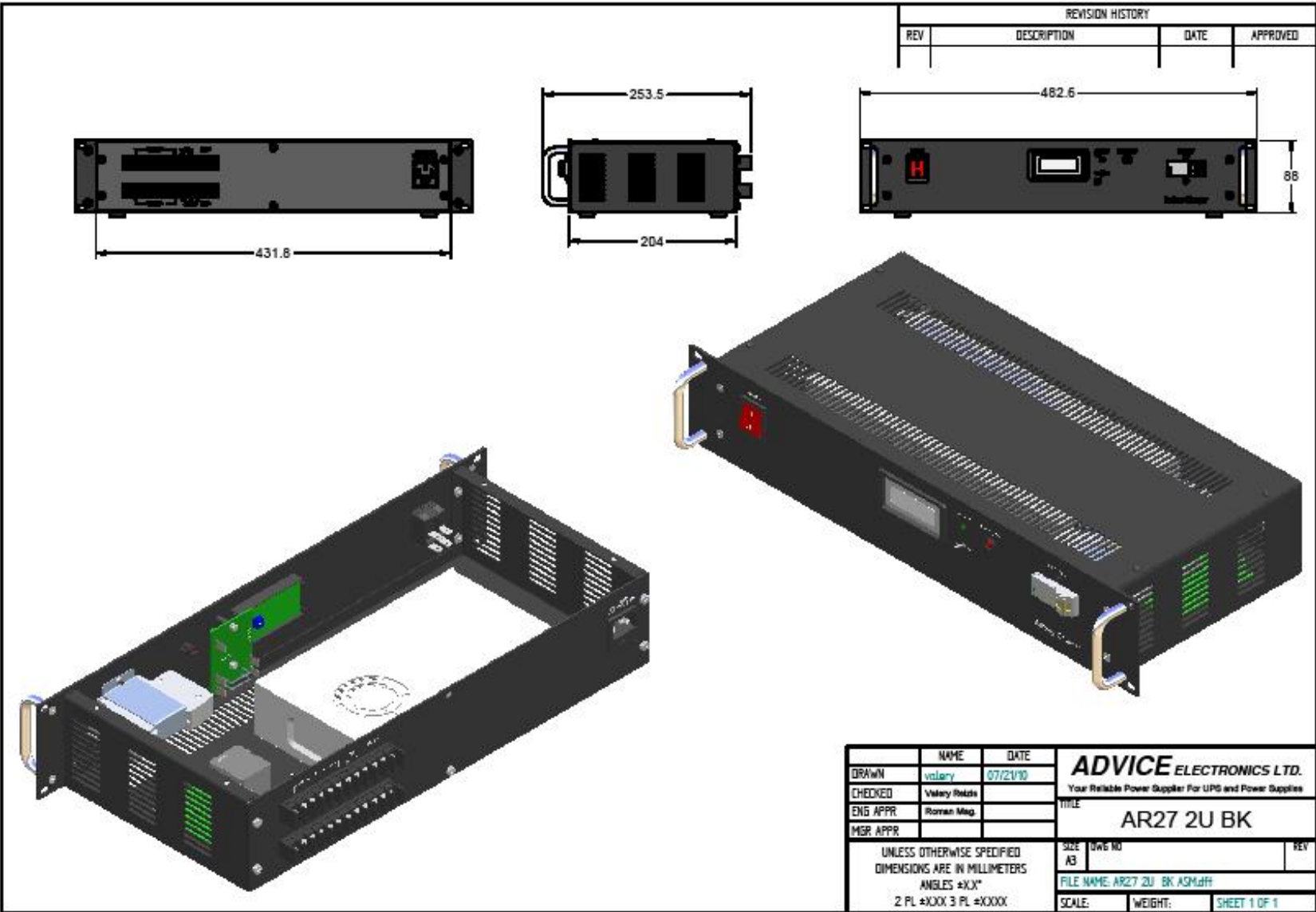
LOW
BAT
LED

DC OUT
LED

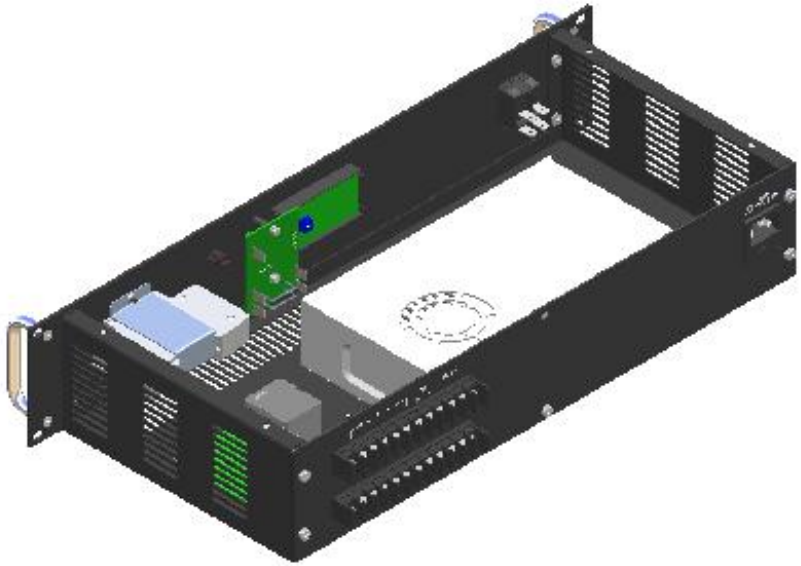
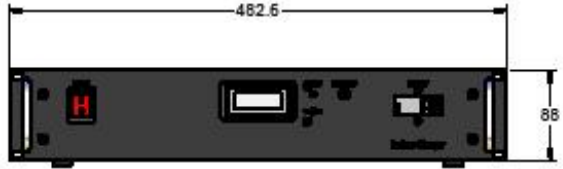
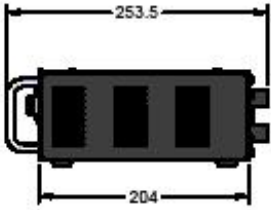
BATTERY
CIRCUIT BREAKER

R1:
27V: 2k

Title		
AR27xx-2U-BK		
Size	Document Number	Rev
A4	<Doc>	01
Date:	Monday, August 23, 2010	Sheet 1 of 1



REVISION HISTORY			
REV	DESCRIPTION	DATE	APPROVED



DRAWN	NAME	DATE	ADVICE ELECTRONICS LTD.	
CHECKED	valery	07/21/10	Your Reliable Power Supplier For UPS and Power Supplies	
ENG APPR	Valery Retala		TITLE	
MGR APPR	Roman Mag		AR27 2U BK	
UNLESS OTHERWISE SPECIFIED DIMENSIONS ARE IN MILLIMETERS ANGLES +X.X° 2 PL #XXXX 3 PL #XXXX			SIZE	REV
			A3	
			FILE NAME: AR27 2U BK ASM.dft	
			SCALE:	WEIGHT: SHEET 1 OF 1